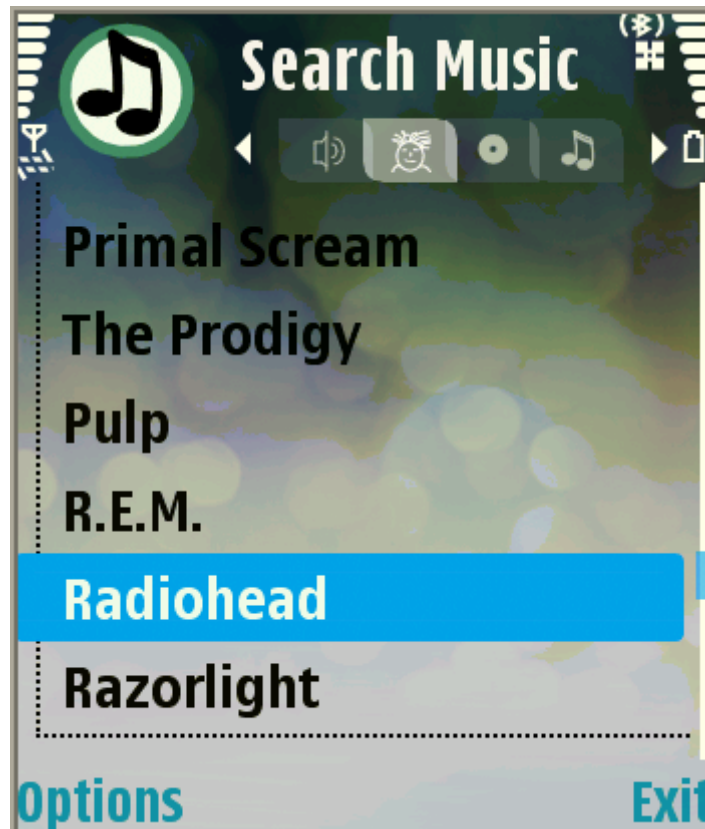


DEVLEX INDUSTRIES



PhoneTunes, Version 4.20

[User Guide](#)

Introduction	3
Feature Overview	3
System Requirements	3
Getting Started	4
PC Setup.....	4
Setting Bluetooth Discoverability Mode	6
Setting the Microsoft Bluetooth Driver's Discoverability Mode.....	6
Setting the Widcomm Bluetooth Driver's Discoverability Mode	7
Setting the Toshiba Bluetooth Driver's Discoverability Mode	8
Setting the IVT BlueSoleil Bluetooth Driver's Discoverability Mode	9
Bluetooth Serial Port Configuration.....	10
IVT BlueSoleil Serial Port Setup.....	12
Phone Installation	13
Basic Usage	13
Phone Keyboard.....	13
Options Menu	14
Settings View.....	14
Queued Music View.....	15
Licensing.....	15
Troubleshooting	16
Connectivity Problems.....	16
Phone Installation problems.....	16
FAQ	17

Introduction

PhoneTunes provides an Apple iTunes interface for a Smartphone, allowing you to control your music collection from the comfort of your phone.

PhoneTunes has an application installed on the Phone and another on the PC. The phone connects to the PC using either a Bluetooth, WiFi or GPRS\3G connection.

Feature Overview

- PhoneTunes collates your music collection into a format suitable for display on a smartphone.
- Seamlessly Bluetooth integration.
- Simple configuration - works right out of the box! Direct access to the bluetooth stack, no slow browsing-for bluetooth devices or time spent attempting to connect-to a Bluetooth device - it just works!
- Support Bluetooth, WiFi or even GPRS\3G connections.
- Phone is automatically updated when you add iTunes tracks.
- Support for queuing individual tracks or entire albums.
- Skip forward or back in the playlist from the smartphone.
- Pause current track from the smartphone.
- Adjust the iTunes volume from the smartphone.
- Sneaky hidden features, cool functionality you need to find for yourself.

System Requirements

- Apple iTunes 4.7.0 or later.
 - Windows XP or Windows Vista.
 - A Symbian Series60 (version 1, 2 or 3) phone.
 - Connectivity (one of):
 - Bluetooth PC support; PhoneTunes has Native support for Microsoft, Widcomm (Broadcom) and Toshiba Bluetooth stacks and Bluetooth Serial Port support for use with other Bluetooth configurations (e.g. IVT BlueSoleil).
- OR
- A Series60 phone supporting WiFi.
- OR
- A Series60 phone setup with a 3G\GPRS access point.

Getting Started

PC Setup

PhoneTunes supports connection via Bluetooth, WiFi or GPRS\3G. The setup steps required for these configurations are largely the same, although there are maybe some specific settings required for particular Bluetooth implementations.

If you are only intending to use PhoneTunes over WiFi\3G\GPRS you can skip the Bluetooth step 4 section and the following sections on setting Bluetooth discoverability and Bluetooth Serial port configuration.

Step 1: Install PhoneTunes by running the PhoneTunes_v4_10_Series60.exe file on your PC. During installation you will be prompted to install PhoneTunes onto your phone.

Step 2: Launch PhoneTunes on the PC from the Start menu, an icon will appear in the PC's system tray:



Step 3: Click on the icon, the PhoneTunes dialog will appear:



Note the Bluetooth driver in use, in the example above "Microsoft Bluetooth Driver"; knowing which Bluetooth driver your PC is using will help with step 4.

Step 4 Bluetooth: Set the PC's Bluetooth Mode to Discoverable. In order for your phone to locate your PC, its bluetooth mode must be set to "Discoverable".

The method for setting your PC's Bluetooth mode varies between Bluetooth Stacks, some common examples are shown in the following sections.

Note: Your PC's Bluetooth Discovery mode only needs to be turned on when attempting to discover a PC from your phone, so after successfully connecting once from the Phone to the PC, your PC's Bluetooth discovery can be turned off.

Note: You do not need to turn your Smartphone's Bluetooth Discovery mode on.

Bluetooth Next Step?

If your PC has Microsoft, Toshiba or Widcomm Bluetooth driver, after setting Bluetooth discovery on, there is no further configuration required, jump ahead to Phone Setup.

If PhoneTunes does not have native support for your PC's bluetooth configuration you can still use PhoneTunes by configuring it to use a Bluetooth Serial Port, as described in the Serial Port Configuration section.

Step 4 WiFi\3G\GPRS: The PhoneTunes PC program exposes a TCP port to allow incoming connections from the phone, port number **29960**.

This Port must be routable from your phone.

You may need to configure your PC's firewall to allow incoming connections on this port and perhaps also your networks firewall if using GPRS\3G to connect.

If stuck, check out our website for further tips: www.devlex.com

There is no further PC configuration required to use a WiFi\GPRS\3G connection, skip ahead to the phone configuration section.

Setting Bluetooth Discoverability Mode

Setting the Microsoft Bluetooth Driver's Discoverability Mode

You only need to follow these steps if your PC is running the Microsoft Bluetooth Stack.

Open "Control Panel \ Network and Internet Connections \ Bluetooth Devices".

Select the "Options" tab.

Ensure "Turn discovery on" is checked.



Setting the Widcomm Bluetooth Driver's Discoverability Mode

You only need to follow these steps if your PC is running the Widcomm Bluetooth Stack.

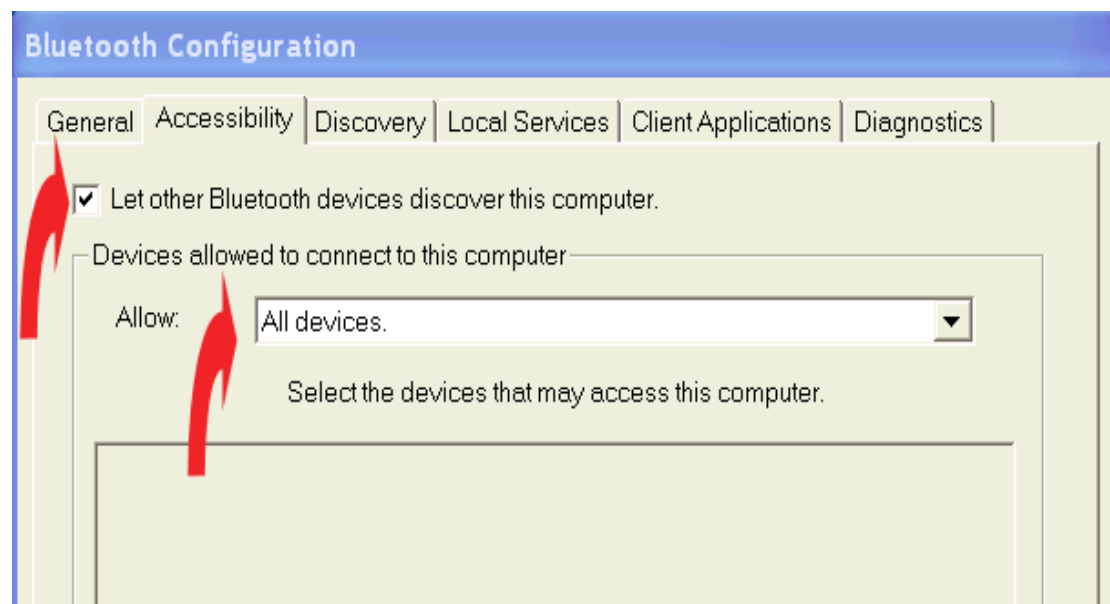
Right-click on the Bluetooth icon in your PC's system tray.

Select "Bluetooth Configuration".

Select the "Accessibility" tab.

Ensure the "Let other Bluetooth devices discover this computer" is checked.

Ensure the "Devices allowed to connect to this computer" is set to "All Devices".



Setting the Toshiba Bluetooth Driver's Discoverability Mode

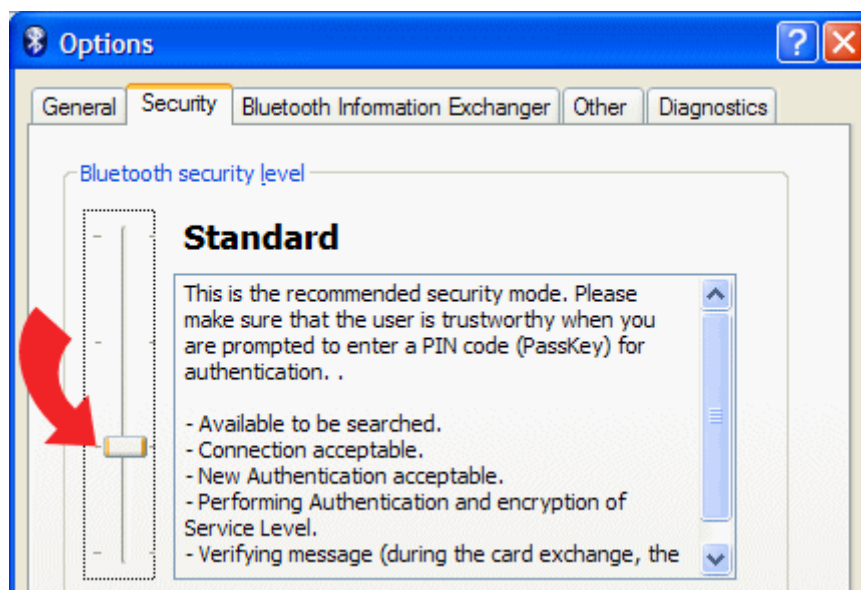
You only need to follow these steps if your PC is running the Toshiba Bluetooth Stack.

Right-click on the Bluetooth icon in your PC's system tray.

Select "Options...".

Select the "Security" tab.

Ensure the "Bluetooth Security Level" is set to "Standard".



Setting the IVT BlueSoleil Bluetooth Driver's Discoverability Mode

You only need to follow these steps if your PC is running the IVT BlueSoleil Bluetooth Stack.

Right-click on the Bluetooth icon in your PC's system tray.

Select "Display".

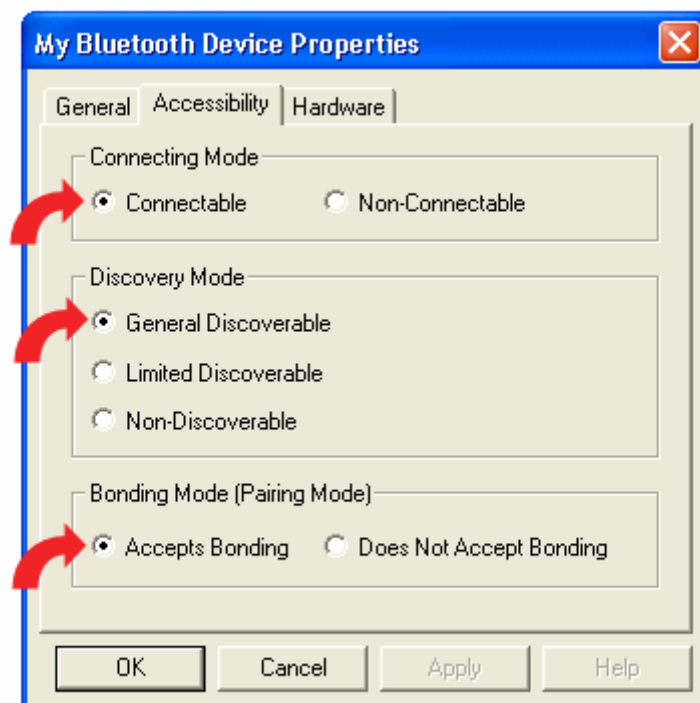
From the "My Bluetooth" menu, Select "Device Properties...".

Select "Accessibility" tab.

Ensure the "Connecting Mode" is set to "Connectable".

Ensure the "Discovery Mode" is set to "General Discoverable".

Ensure the "Bonding Mode" is set to "Accepts Bonding".



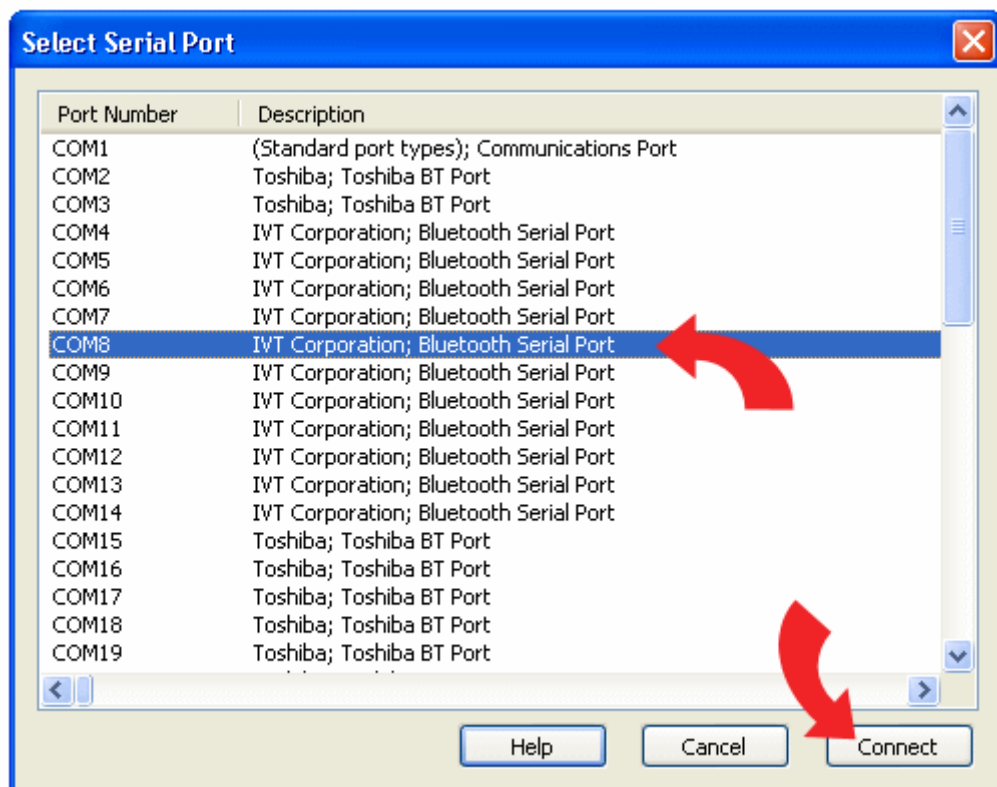
Bluetooth Serial Port Configuration

You only need to follow these steps if PhoneTunes does not have native support your PC's Bluetooth stack, i.e. it is not running the Microsoft, Toshiba or Widcomm Bluetooth Stacks.

1. Click the "Change" button next to the Serial Port identifier of in the PhoneTunes PC app.



2. From the Select Serial Port dialog, select the port number your Bluetooth stack uses for its Serial Port Service (If there is more than one Serial Port Service, select the Comm Port number of the last one), and select "Connect".



You may find the required serial port number:

- a) Listed inside your System tray's Bluetooth Application,

under Serial Port Service.

b) Displayed on your PC when the PhoneTunes phone app attempts to connect to the PC.

An example is shown in the following section for the IVT BlueSoleil Bluetooth stack.

3. After changing the serial port, select the Queue View on the phone app. If the PhoneTunes playlist is displayed, congratulations everything is setup!

If you are not sure which port to use, try them all, one at a time.

If problems persist, please contact Devlex at support@devlex.com.

IVT BlueSoleil Serial Port Setup

This is an example of how to find the Serial Port number if your PC uses the IVT BlueSoleil Bluetooth stack.

You your PC has a different Bluetooth stack, or you are using WiFi/GPRS/3G to connect to PhoneTunes, skip this section.

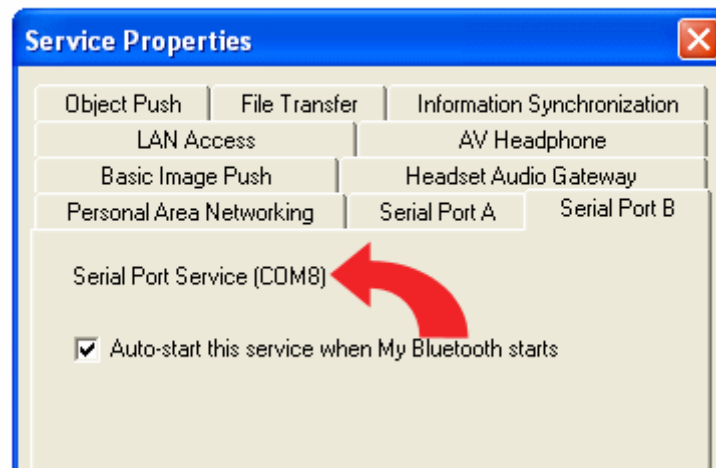
The Serial Port number to use if your PC is running the IVT BlueSoleil Bluetooth stack can be found by:

Right-click on the Bluetooth icon in your PC's system tray.
Select "Display".

From the "My Services" menu, Select "Properties...".

Select the "Serial Port B" tab.

The required Comm Port number is shown at the top of the dialog:



Phone Installation

PhoneTunes can be installed on either the phone's internal memory or an external storage card.

Basic Usage

PhoneTunes is a simple application with just 4 views, from left to right:

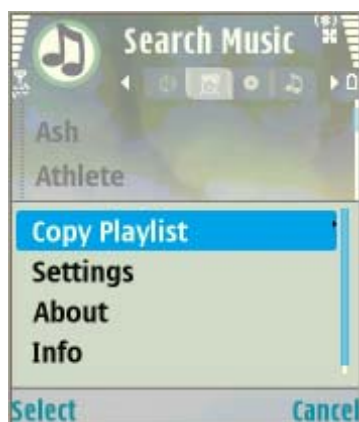
1. **Queued Music View** – A list of the tracks currently queued in the PhoneTunes playlist.
2. **Artist View** – An alphabetical list of all the available artists.
3. **Album View** – A list of the albums available from the selected artist.
4. **Track View** – A list of tracks from the selected album.

Phone Keyboard

Although most operations are performed using the Joystick or menu key, the phone keyboard also has some functionality:



Options Menu



Copy Playlist – Copies the tracks from an existing iTunes playlist into the PhoneTunes queue.

Settings – Configure connection settings.

About – Program and Support information.

Info – Current PC and track count info.

Settings View



Connection – Select between a Bluetooth or a WiFi \ Network connection.

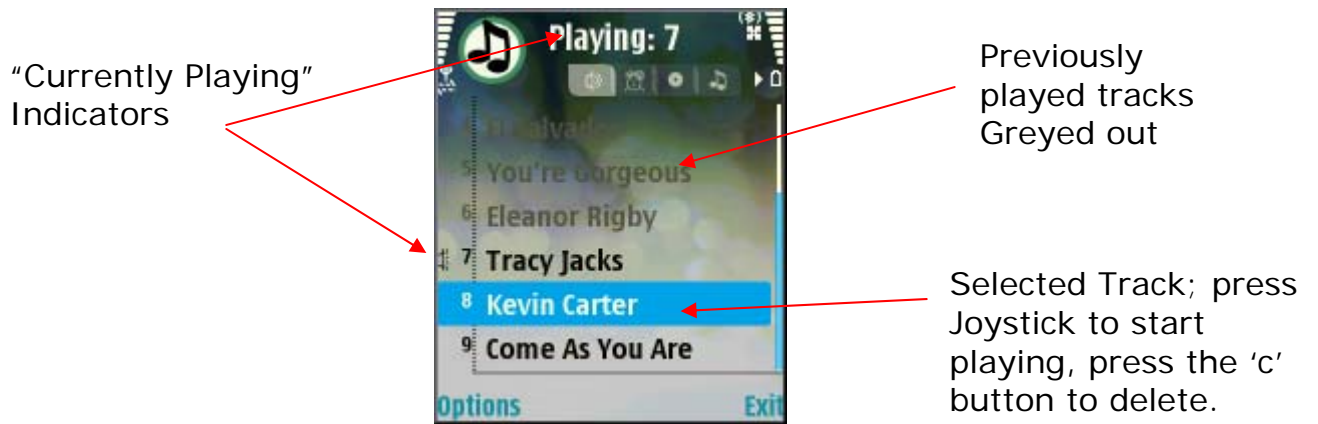
Bluetooth PC – Choose this setting to browse for local PCs running PhoneTunes.

WiFi \ Network – Select the Access Point to use when connecting to the PhoneTunes PC.

Server Address – The IP address of PhoneTunes PC.

Billable Events – Toggle on and off billable event prompts.

Queued Music View



Licensing

Enter your license key using the Phone application. An unlicensed PhoneTunes application prompts for a license key every time it is started.

The license key is verified on the phone not the PC, so you can use a licensed phone to control any number of PCs.

Troubleshooting

Connectivity Problems

Please ensure Bluetooth is correctly functioning on your PC (i.e. you can browse other Bluetooth devices), and that Bluetooth is enabled on your phone. Your PC must be in **discoverable** mode when selecting a Bluetooth PC from the Settings View. Please contact us if you cannot solve connectivity problems at support@devlex.com.

Phone Installation problems

Some Nokia phones have shipped with software installation off by default. This can be switched on (temporarily if you wish) from the "Settings" item in the "Options" menu of the "(App)Manager".

FAQ

How much memory does PhoneTunes use on my device?

PhoneTunes uses 45-100K (device dependant) of phone memory, i.e. it is nice and small.

The amount of storage required for the iTunes track database is dependant on the number of tracks in the database. As a rough indication, a database containing 1000 tracks uses about 20k of storage space.

Is this really free? Are there any charges when I use PhoneTunes?

Yes PhoneTunes is provided free of charge!

There are no fees or charges for using PhoneTunes (other than the standard network charges that maybe incurred if you make a GPRS\3G internet connection from your phone to your PC).

We hope to keep PhoneTunes free; we appreciate your donations and support of our commercial products.

<http://www.devlex.com/Donate>

What are the Billable event prompts?

By default PhoneTunes will prompt you if it is about to make an internet connection as this may incur a charge to your mobile phone bill.

These prompts can be turned on or off from the Settings menu.

Can I use multiple phones running PhoneTunes with the same PC

Yeah! It's one of the smartest features. Go on, have a PhoneTunes party.

Please note, Devlex cannot accept any responsibility for any arguments \ fights \ divorce that may occur between people that delete other people tracks from the playlist.

Can I use PhoneTunes with multiple PCs?

Yes. The registration is tied to the mobile phone (rather than a PC). Simply install the PC software on a different PC and press "Select PC" from the mobile phone application.

Which Bluetooth stacks are supported directly?

We currently have native support for the WidComm, Toshiba and Microsoft Bluetooth stacks.

Which versions of iTunes does PhoneTunes control?

Apple iTunes version 4.7.0 or later, running on Windows XP or Vista.

Does PhoneTunes work with Vista?

Yes, PhoneTunes is fully compatible with Microsoft Vista.

Why Does PhoneTunes expose a TCP Port?

PhoneTunes opens a TCP port (port number 29960) to accept incoming connections from WiFi\Network devices.