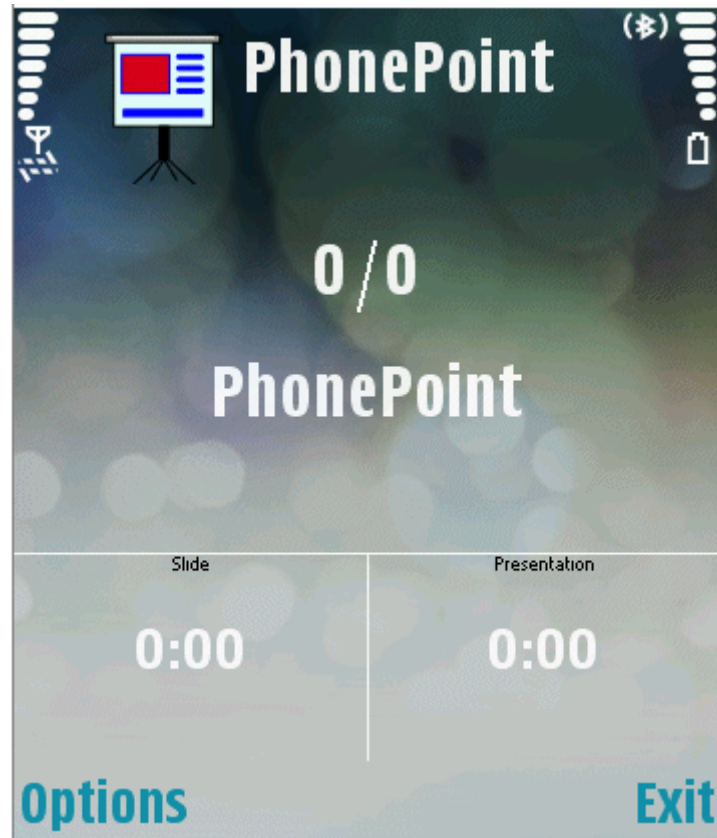


DEVLEX INDUSTRIES



PhonePoint, Version 4.20

[User Guide](#)

Introduction	3
Feature Overview	3
System Requirements	3
Getting Started.....	4
PC Setup.....	4
Setting Bluetooth Discoverability Mode	6
Setting the Microsoft Bluetooth Driver's Discoverability Mode.....	6
Setting the Widcomm Bluetooth Driver's Discoverability Mode	7
Setting the Toshiba Bluetooth Driver's Discoverability Mode	8
Setting the IVT BlueSoleil Bluetooth Driver's Discoverability Mode	9
Bluetooth Serial Port Configuration.....	10
IVT BlueSoleil Serial Port Setup.....	12
Phone Installation	13
Connecting for the First Time	13
Basic Usage	14
Sample screenshot	14
Slide Navigation	14
Options Menu	14
Open Presentation.....	14
Slide Notes.....	15
Starting Embedded Slide Object	15
Licensing.....	15
Troubleshooting	16
Connectivity Problems.....	16
Phone Installation problems.....	16
FAQ	17

Introduction

PhonePoint is the professional wireless presentation tool. It has been designed from the ground up as a tool for presenters; slowly fine tuned with feedback from these professionals, people for whom presentations play an essential role in their job.

Whether an occasional PowerPoint user or, if indeed, presentations are a critical part of your job, PhonePoint will give you a competitive and polished edge when delivering PowerPoint presentations. With PhonePoint you can concentrate upon just the presentation and the audience, leaving the PC well alone.

Feature Overview

- PhonePoint allows you, remotely from your phone, to move Forward, Backward and Restart your presentation.
- Seamless Bluetooth Integration.
- Simple configuration - works right out of the box! Direct access to the bluetooth stack, no slow browsing-for bluetooth devices or time spent attempting to connect-to a Bluetooth device - it just works!
- Ideal for presentations using a projector - freeing you up to stand next to your presentation. No more sneaky change-slide hand signals to a colleague positioned next to the PC.
- Large and Clear display of the Current Slide's Title and Position.
- Keep your presentation on track - counters display the time spent on the current slide and for the total presentation.
- Quickly (and privately) access the Speaker Notes for the Current Slide on the phone's screen.
- Supports all phones in their native screen resolutions.
- Remotely play (and stop) video and audio embedded within slides.
- Works wirelessly up to 10 meters - 30 foot from your PC.

System Requirements

- Microsoft PowerPoint 2000 or later (including Microsoft PowerPoint 2007).
- Windows XP or Windows Vista.
- A Symbian Series60 (version 1,2 or 3) or Microsoft Smartphone 2003 \ 2005 phone.
- Bluetooth PC support, PhonePoint has Native support for Microsoft, Widcomm (Broadcom) and Toshiba bluetooth stacks and Bluetooth Serial Port support for use with other Bluetooth configurations (e.g. IVT BlueSoleil).

Getting Started

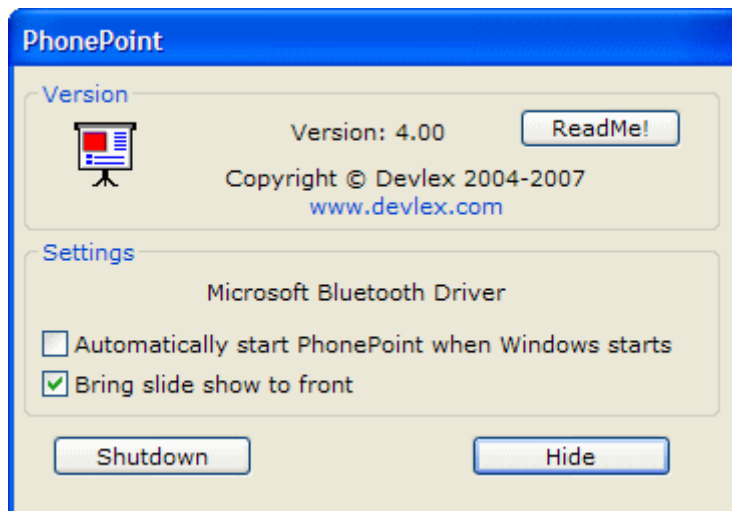
PC Setup

Step 1: Install PhonePoint by running the PhonePoint_v4_20_Series60.exe file on your PC. During installation you will be prompted to install PhonePoint onto your phone.

Step 2: Launch PhonePoint on the PC from the Start menu, an icon will appear in the PC's system tray:



Step 3: Click on the icon, the PhonePoint dialog will appear:



Note the Bluetooth driver in use, in the example above "Microsoft Bluetooth Driver"; knowing which Bluetooth driver your PC is using will help with step 4.

Step 4: Set the PC's Bluetooth Mode to Discoverable.

In order for your phone to locate your PC, its bluetooth mode must be set to "Discoverable".

The method for setting your PC's Bluetooth mode varies between Bluetooth Stacks, some common examples are shown in the following sections.

Note: Bluetooth Discovery only needs to be turned on when attempting to discover a PC from your phone, so after successfully connecting once from the Phone to the PC, Bluetooth discovery can be turned off.

Next Step?

If your PC has Microsoft, Toshiba or Widcomm Bluetooth driver, after setting Bluetooth discovery on, there is no further configuration required, jump ahead to Phone Setup.

If PhonePoint does not have native support for your PC's bluetooth configuration you can still use PhonePoint by configuring it to use a Bluetooth Serial Port, as described in the Serial Port Configuration section.

Setting Bluetooth Discoverability Mode

Setting the Microsoft Bluetooth Driver's Discoverability Mode

You only need to follow these steps if your PC is running the Microsoft Bluetooth Stack.

Open "Control Panel \ Network and Internet Connections \ Bluetooth Devices".

Select the "Options" tab.

Ensure "Turn discovery on" is checked.



Setting the Widcomm Bluetooth Driver's Discoverability Mode

You only need to follow these steps if your PC is running the Widcomm Bluetooth Stack.

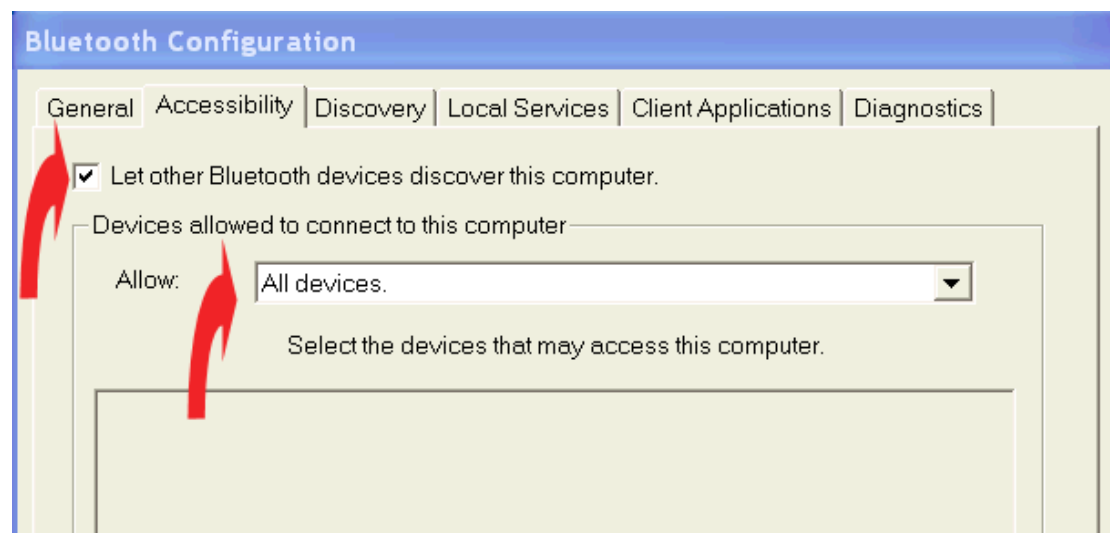
Right-click on the Bluetooth icon in your PC's system tray.

Select "Bluetooth Configuration".

Select the "Accessibility" tab.

Ensure the "Let other Bluetooth devices discover this computer" is checked.

Ensure the "Devices allowed to connect to this computer" is set to "All Devices".



Setting the Toshiba Bluetooth Driver's Discoverability Mode

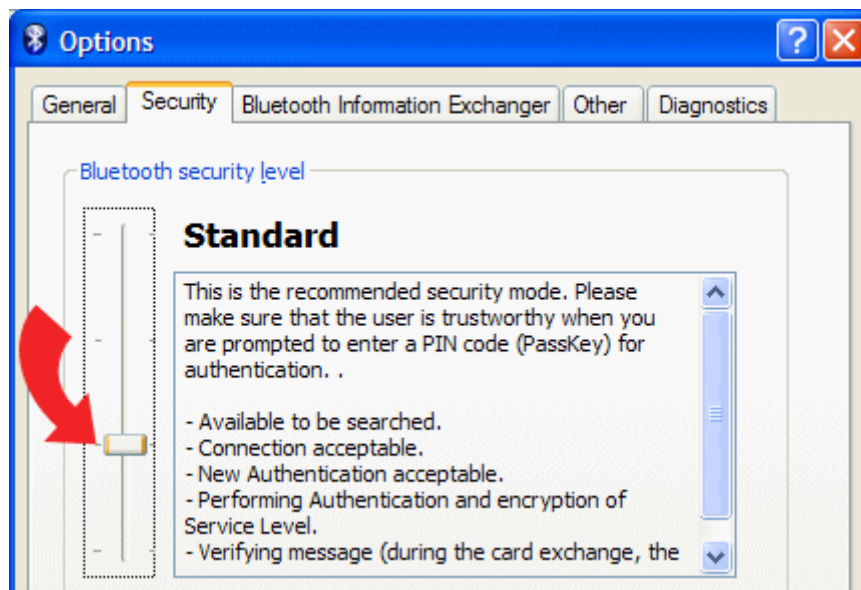
You only need to follow these steps if your PC is running the Toshiba Bluetooth Stack.

Right-click on the Bluetooth icon in your PC's system tray.

Select "Options...".

Select the "Security" tab.

Ensure the "Bluetooth Security Level" is set to "Standard".



Setting the IVT BlueSoleil Bluetooth Driver's Discoverability Mode

You only need to follow these steps if your PC is running the IVT BlueSoleil Bluetooth Stack.

Right-click on the Bluetooth icon in your PC's system tray.

Select "Display".

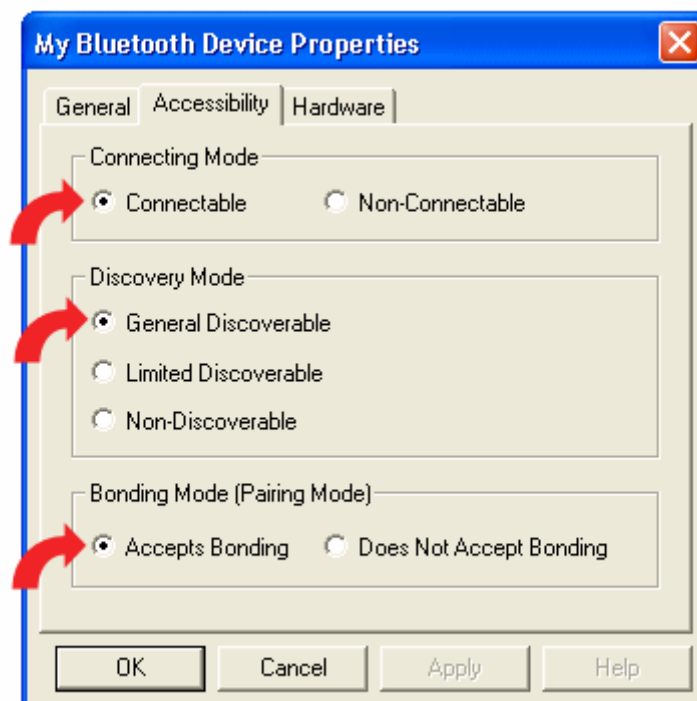
From the "My Bluetooth" menu, Select "Device Properties...".

Select "Accessibility" tab.

Ensure the "Connecting Mode" is set to "Connectable".

Ensure the "Discovery Mode" is set to "General Discoverable".

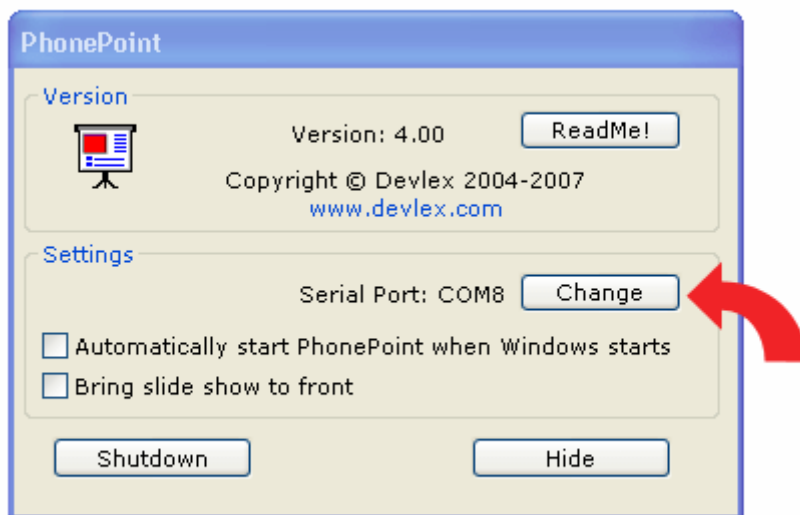
Ensure the "Bonding Mode" is set to "Accepts Bonding".



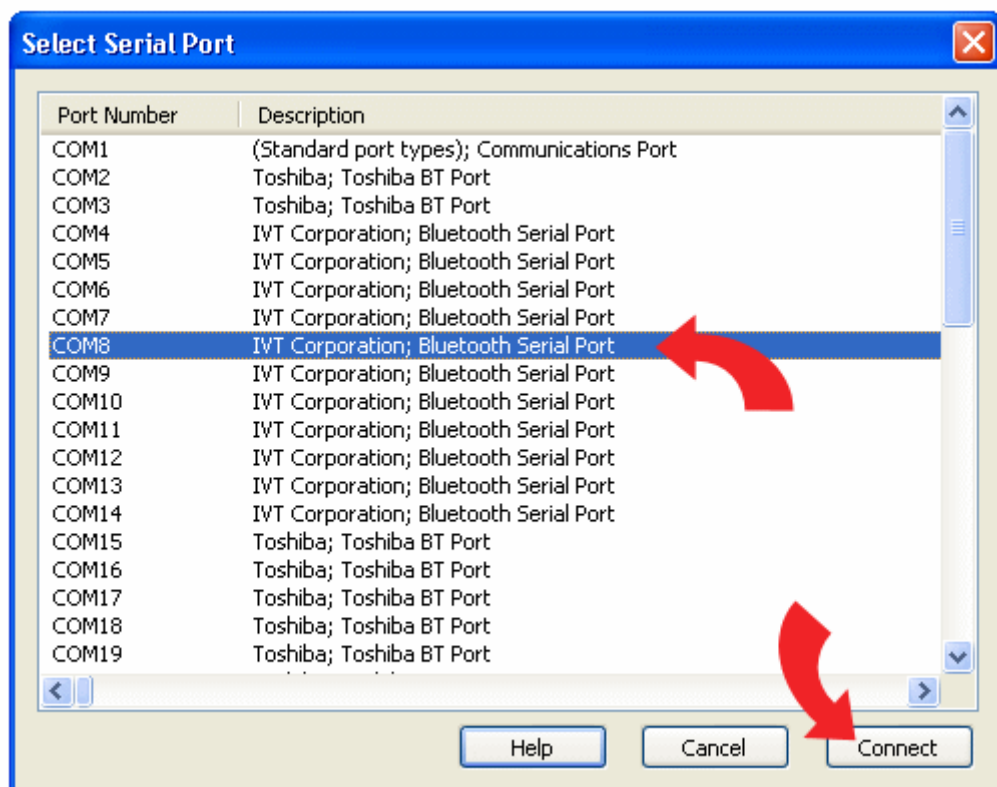
Bluetooth Serial Port Configuration

You only need to follow these steps if PhonePoint does not have native support your PC's Bluetooth stack, i.e. it is not running the Microsoft, Toshiba or Widcomm Bluetooth Stacks.

1. Click the "Change" button next to the Serial Port identifier of in the PhonePoint PC app.



2. From the Select Serial Port dialog, select the port number your Bluetooth stack uses for its Serial Port Service (If there is more than one Serial Port Service, select the Comm Port number of the last one), and select "Connect".



You may find the required serial port number:

- a) Listed inside your System tray's Bluetooth Application, under Serial Port Service.
- b) Displayed on your PC when the PhonePoint phone app attempts to change a slide, i.e. try hitting "Next" on the phone application.

An example is shown in the following section for the IVT BlueSoleil Bluetooth stack.

3. After changing the serial port, select "Next" on the phone app. If your PowerPoint slide show is displayed on your PC, congratulations everything is setup!

If you are not sure which port to use, try them all, one at a time.

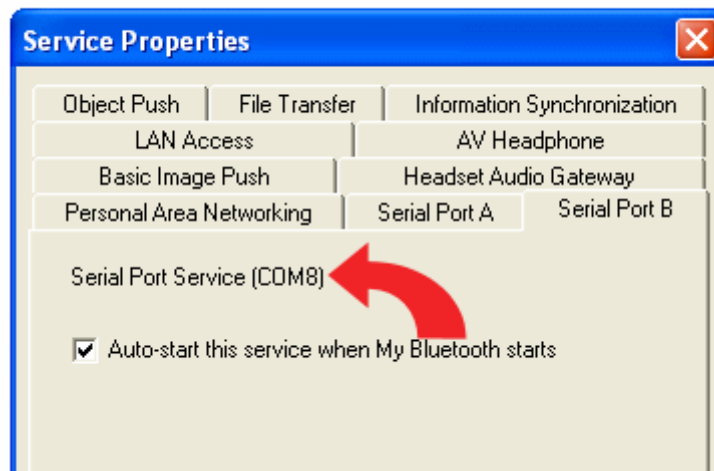
If problems persist, please contact Devlex at support@devlex.com.

IVT BlueSoleil Serial Port Setup

The Serial Port number to use if your PC is running the IVT BlueSoleil Bluetooth stack can be found by:

Right-click on the Bluetooth icon in your PC's system tray.
Select "Display".
From the "My Services" menu, Select "Properties...".
Select the "Serial Port B" tab.

The required Comm Port number is shown at the top of the dialog:



Phone Installation

PhonePoint can be installed on either the phone's internal memory or an external storage card.

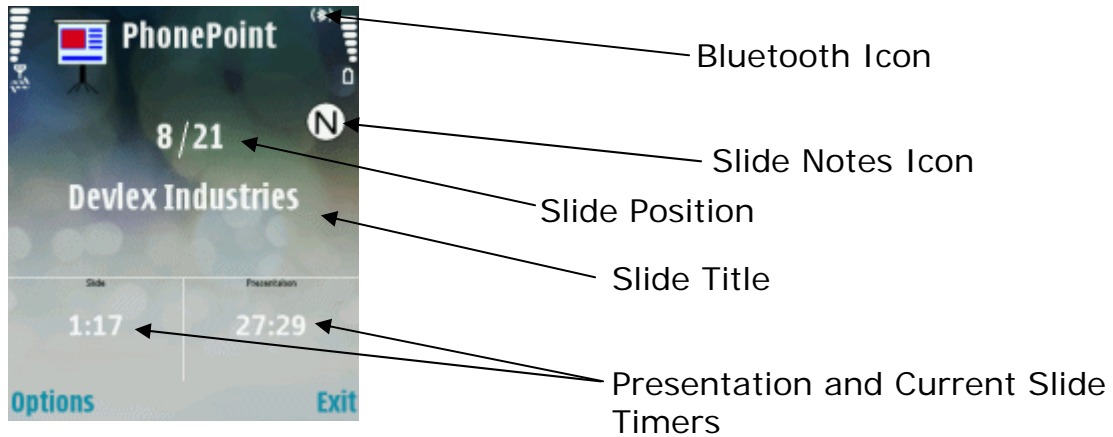
Connecting for the First Time

After installing PhonePoint on the PC and on the Phone, follow this guide to illustrate how easy PhonePoint is to use:

1. Launch the PhonePoint PC program.
2. Open a PowerPoint presentation on the PC.
3. Launch the PhonePoint Phone program.
4. From the Phone app's menu choose "Select PC". Select your PC from the list. If your PC is not found in the list, check it has Bluetooth turned on (and set to Discoverable) and try again.
5. Move the joystick right on the phone.

Basic Usage

Sample screenshot



Slide Navigation

Use the Joystick or menu commands to navigate through the PowerPoint presentation.

Options Menu



First Slide – Restarts presentation at slide one.

Goto Slide – Jumps to a particular slide number.

Register– Enter registration code.

Reset Timer – Resets both the Current Slide and Presentation timers.

Open Presentation – Open the PC's last used PowerPoint Presentation.

Select PC – Switches PC.

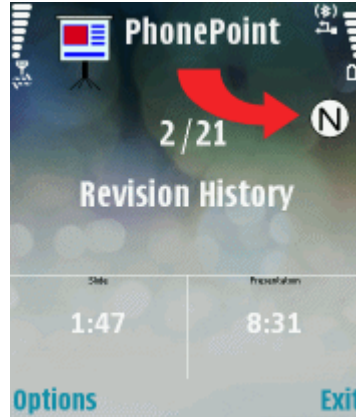
About – Program and Support information.

Open Presentation

This menu command opens the last used PowerPoint presentation by searching through the "recently used" list of office applications, looking for a ".ppt" or ".pps" type of file. Upon finding a suitable file, the file is launched, opening the PowerPoint application if necessary.

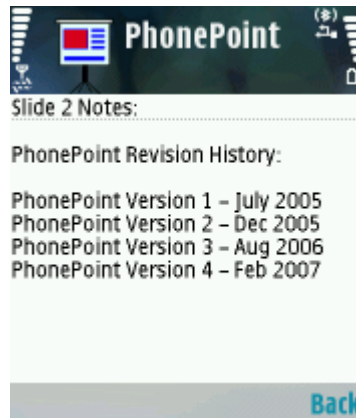
Slide Notes

If speaker notes are available for a particular slide, the Slide Notes icon is displayed on the Phone:



To view (and switch back from) the speaker notes view, either:

1. Press the phone's '#' key.
2. Press and hold the Joystick button (for about 1 second).



Starting Embedded Slide Object

If a Slide contains an embedded object such as a movie or sound clip that requires a mouse click to start, this can be controlled from the phone by pressing and holding the '*' key for about 1 second. Pressing the key again will stop playing the embedded object.

Licensing

Enter your license key using the Phone application by selecting the Register menu item.

The license key is verified on the phone not the PC, so you can use a licensed phone to control any number of PCs.

Troubleshooting

Connectivity Problems

Please ensure Bluetooth is correctly functioning on your PC (i.e. you can browse other Bluetooth devices), and that Bluetooth is enabled on your phone. Your PC must be in discoverable mode when using the Select PC command on your phone. Please contact us if you cannot solve connectivity problems at support@devlex.com.

Phone Installation problems

Some Nokia phones have shipped with software installation off by default. This can be switched on (temporarily if you wish) from the "Settings" item in the "Options" menu of the "(App)Manager".

FAQ

How does the trial version differ from the regular version?

The functionality of the trial and regular versions are identical. The trial software simply contains popup banners to request registration. There is no trial expiration period. After purchasing a registration code, you do not need to re-install the software, simply enter the registration code on the phone application.

How do I install PhonePoint?

Install the .exe file on your PC, then install the .sis /.cab file on your phone. Please check out the release notes for further details.

How much memory does PhonePoint use on my device?

PhonePoint uses about 30-70K of phone memory, i.e. it is nice and small.

How do I enter the registration code?

Enter the registration code into the phone application. The application will prompt for a registration code when launched.

How much do upgrades cost?

Upgrades are supplied free of charge. Always have been, always will be.

Can I use PhonePoint with multiple PCs?

Yes. The registration is tied to the mobile phone (rather than a PC). Simply install the PC software on a different PC and press "Select PC" from the mobile phone application.

Which versions of PowerPoint does PhonePoint control?

Microsoft PowerPoint 2000 or later, running on Windows XP or Vista.

How do I view the Speaker Notes for a slide?

Either press and hold the Joystick button or press the '#' key.

What does "Open Presentation" actually do?

The "Open Presentation" phone menu command will open the most recently used presentation in PowerPoint, starting PowerPoint if necessary. It may take a few seconds to open.

Why do some slides not display a title?

If there isn't a title text field on a slide, perhaps it has only a picture or is a continuation of a previous slide, PhonePoint will not display a title. The slide position will, of course, still be displayed.

Does PhonePoint work with Vista?

Yes, PhonePoint is fully compatible with Microsoft Vista and Office 2007.

Why Does PhonePoint expose a TCP Port?

PhonePoint opens a TCP port (port number 29960) to accept incoming connections from WiFi devices.